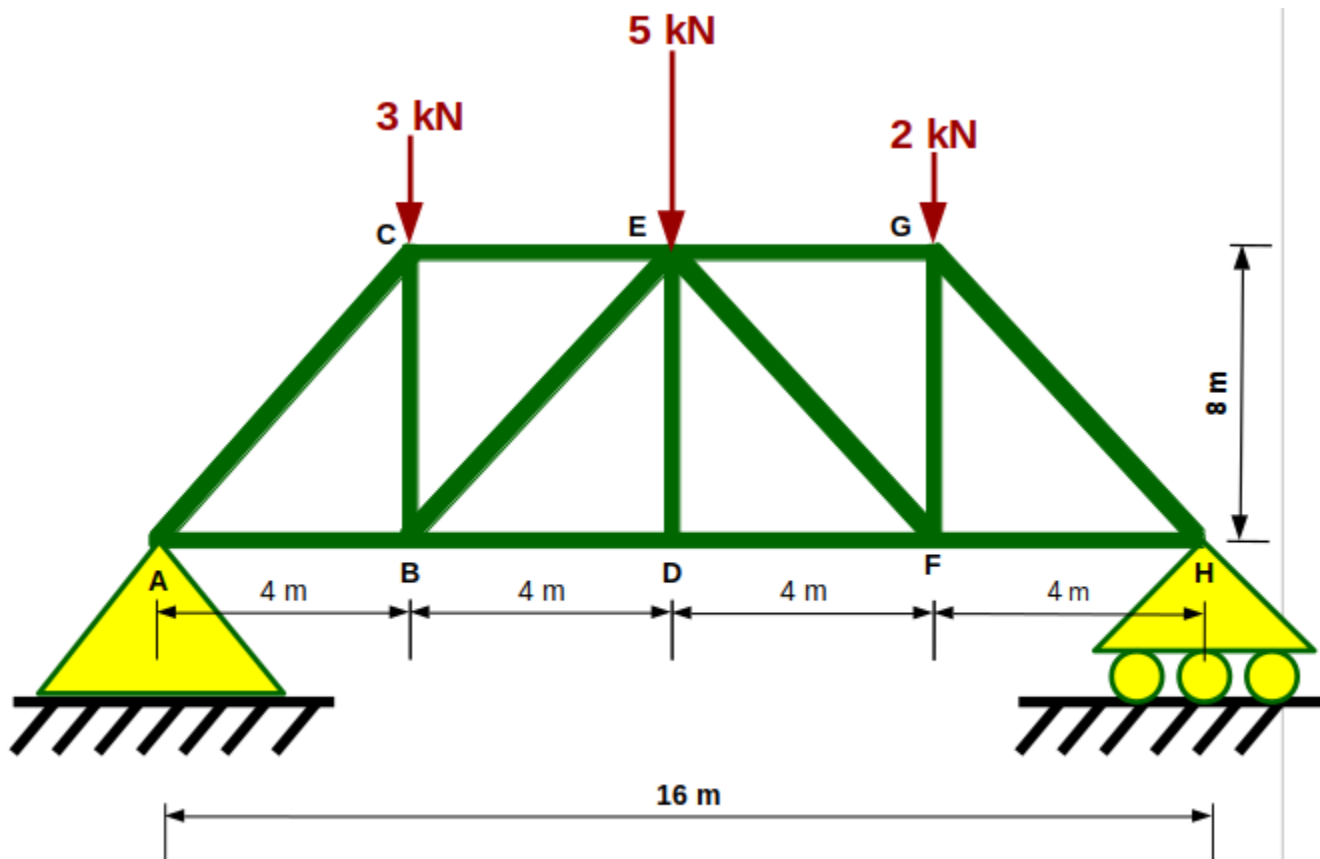


Date: 18th December 2018

The truss shown below is supported by a pin at A and a roller at H. Compute the forces in member CE, BE and BD and indicate whether the members are in tension (T) or compression (C).





DTY Tutoring, inc.
Email: dtytutoring@gmail.com
Website: www.dtytutoring.com

Answers (refer to solutions for detail)

$$F_{EC} = 2.63 \text{ kN (C)}$$

$$F_{BE} = 2.52 \text{ kN (C)}$$

$$F_{BD} = 3.75 \text{ kN (T)}$$