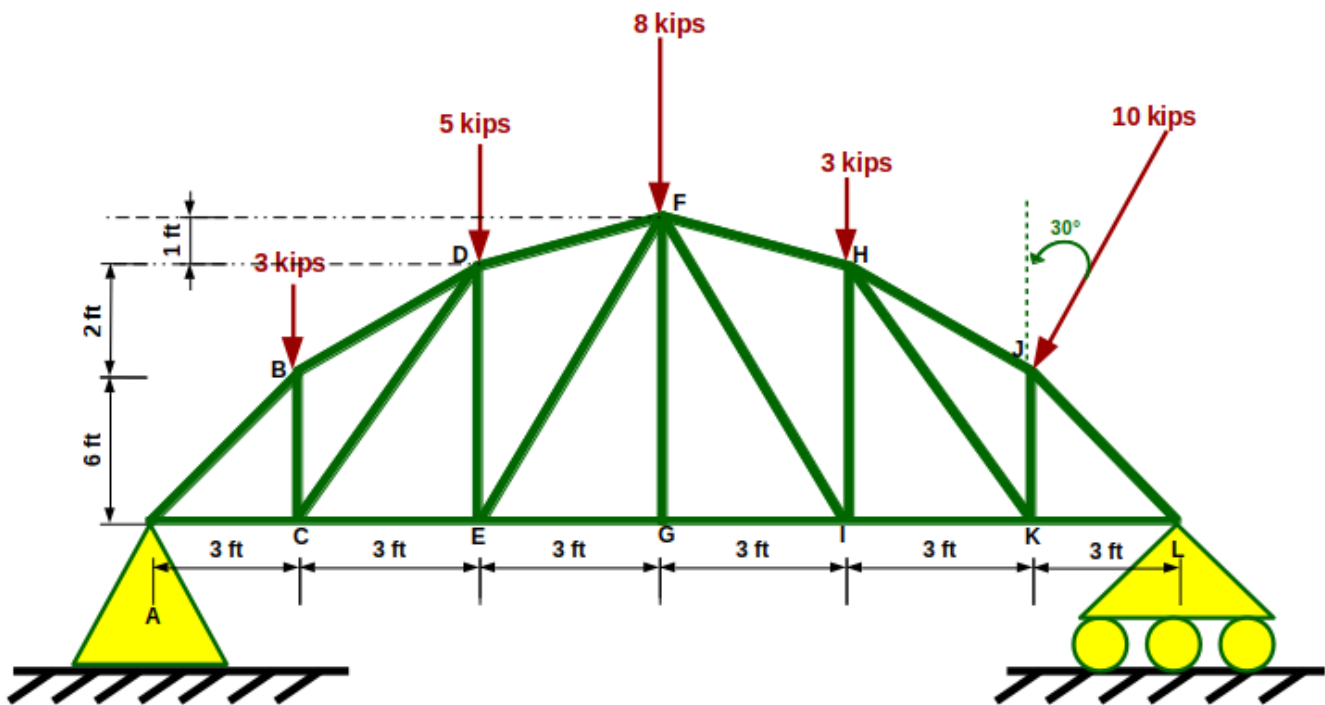


Date: 15<sup>th</sup> January 2020

The horizontal bowstring truss shown below is supported by a pin at A and a roller at L. Compute the forces in member DF, EF and EG and indicate whether the members are in tension (T) or compression (C).



Copyright © 2019  
 DTY Tutoring, Inc.  
 All rights reserved.

**Answers (refer to solutions for detail)**

$$F_{EG} = 5.28 \text{ kips (T)}$$

$$F_{EF} = 2.99 \text{ kips (C)}$$

$$F_{DF} = 9.84 \text{ kips (C)}$$